

Connecting to a Cube

Contents

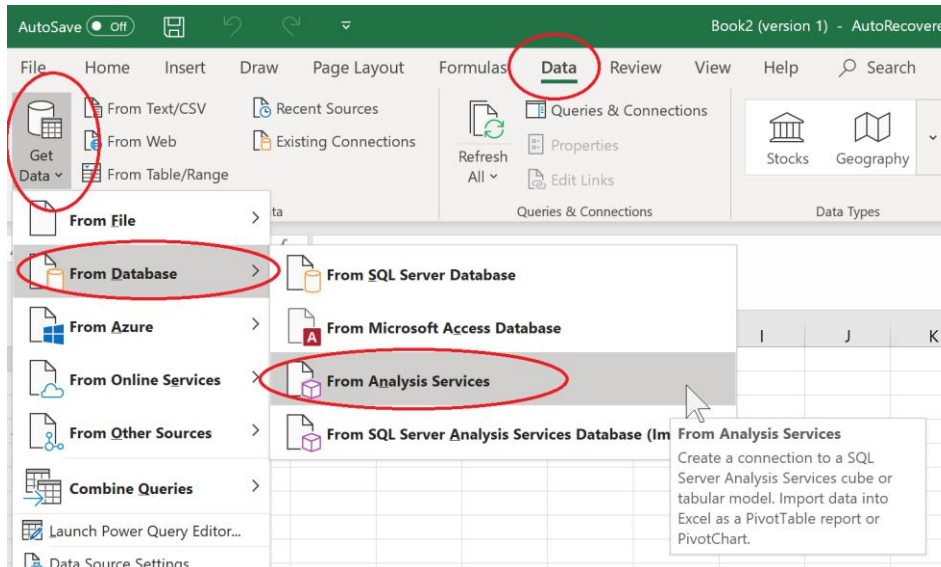
Connection through Excel.....	1
Connecting to Analysis Services database	1
Enter Server, Username and Password	1
Select Cube.....	2
Import Data.....	3
Connection through Power BI etc.....	3

Connection through Excel

Connecting to Analysis Services database

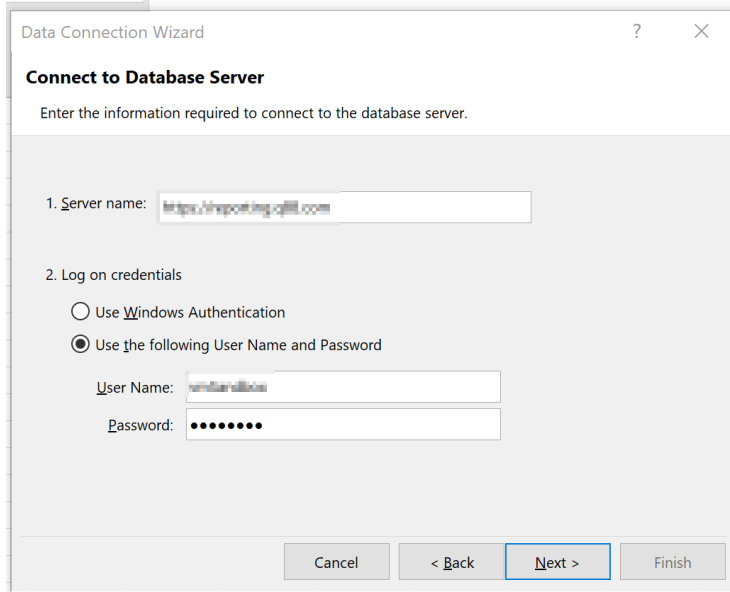
1. Data
2. Get Data
3. From Database
4. From Analysis Services

Depending on your version of Excel the steps may be slightly different



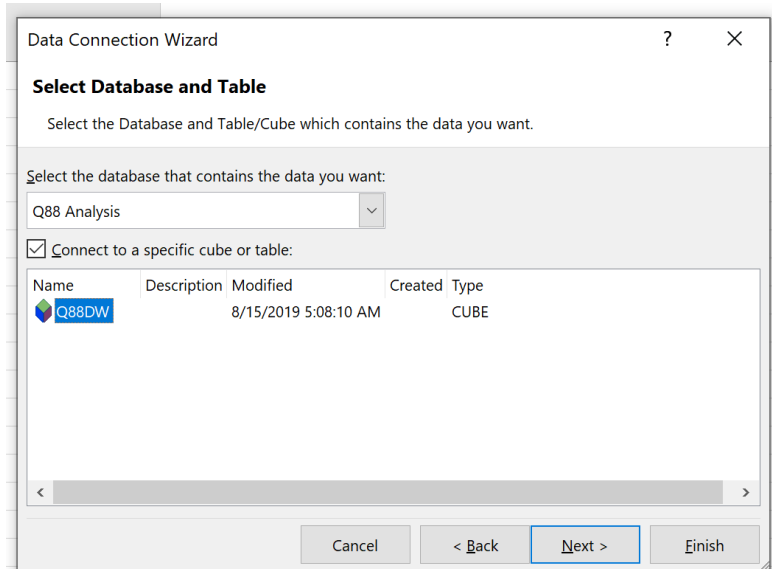
Enter Server, Username and Password

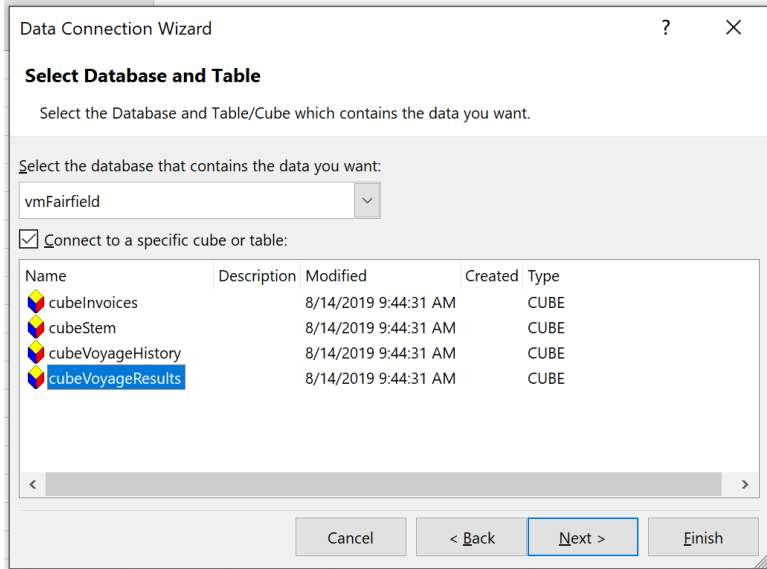
1. Analysis cube is on server: <https://reporting.q88.com>
2. Other cubes are on server: <https://olap.q88.com>
3. Select User Name and Password Authentication



Select Cube

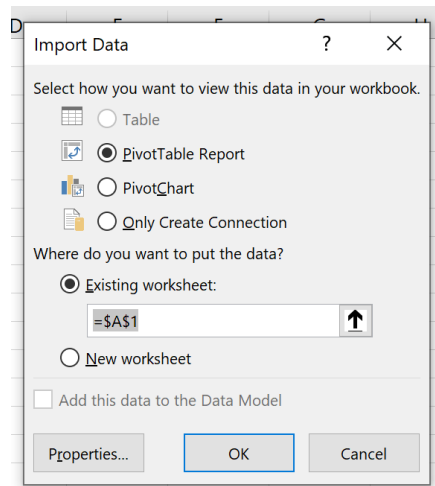
1. On Analysis Server there is only one Cube
2. The other Server has four Cubes
 - a. Three are the same as website
 - b. Voyage History is specialist cube for analysts. Please ask for assistance noting especially that it must always be filtered to a specific day.
3. Click next to edit connection file name
4. Or just Finish to go to import data





Import Data

Normally just accept all the defaults



Connection through Power BI etc

Other BI tools also have connections for Analysis Services which may also be expressed as SSAS or Microsoft SQL Server Analysis Services.

Credentials will require Server, User name and Password which are identical to login via Excel.